

# Bonding Seam Sealing & Welding Machines

# CONTENTS

Catalogue of each model is also available. For further details, please refer to the individual machine catalogue.

<b>TAPE BONDING / SEAM SEALING</b>			
JEUX-AI-002	10	JEUX-CS-671	42
JEUX-AI-101-IRJ	11	JEUX-CS-672	43
JEUX-AI-107	12	JEUX-CS-673	44
JEUX-AI-118	13	JEUX-CS-674	45
Selection Guide for JEUX-AI-Series	14	JEUX-CS-675	46
JEUX-SF-806	17	JEUX-CS-676	47
JEUX-SF-816	18	JEUX-CS-677	48
JEUX-SF-828	19	JEUX-CS-678	49
QHP-A08	20	JEUX-CS-679	50
<b>ULTRASONIC WELDING</b>		JEUX-CS-680	51
JEUX-7510	22	JEUX-CS-681	52
JEUX-US-511	23	JEUX-CS-682	53
JEUX-US-512	24	JEUX-CS-683	54
LWU-3015-4BT	25	JEUX-CS-686	55
<b>HEAT PRESSING</b>		JEUX-CS-687	56
JEUX-CS-651	27	JEUX-CS-688	57
JEUX-CS-652	28	JEUX-CS-693	58
JEUX-CS-653	29	JEUX-CS-694	59
JEUX-CS-654	30	JEUX-CS-695	60
JEUX-CS-655	31	JEUX-CS-696	61
JEUX-CS-658	32	JEUX-CS-697	62
JEUX-CS-661	33	JEUX-CS-698	63
JEUX-CS-662	34	JEUX-CS-700	64
JEUX-CS-663	35	JEUX-CS-701	65
JEUX-CS-664	36	JEUX-CS-702	66
JEUX-CS-665	37	JEUX-CS-703	67
JEUX-CS-666	38	JEUX-CS-704	68
JEUX-CS-667	39	Selection Guide for Heat Pressing Machines	69
JEUX-CS-668	40	<b>TESTING MACHINES</b>	
JEUX-CS-669	41	JEUX-HT-309	73
		JEUX-HT-360	74
		JEUX-TD-100	75
		JEUX-TD-200	75
		Optional Items	76



Juki Central Europe (JCE), a subsidiary of Juki Corporation, was established in 2005 as the official body coordinating sales and logistics across twenty European countries as well as Russia, North Africa and Turkey. From the company offices in Warsaw, Poland; sales, marketing, logistics and technical support services are coordinated for the entire extended European market-place. The company's strengths are leveraged through an extensive distributor network that has been established over the years, offering the shared knowledge and expertise of industry leading experts in the sewing sector.

Juki Central Europe's different office in Moscow, Minsk and Turkey, as well as Juki Italia S.p.A, again add to our extensive network supporting and maintaining the Juki brand across the continent and beyond.

Juki offers an extensive line of industrial sewing machines for the apparel industry – ranging from Lockstitch, Overlock and Coverstitch machines, to electronic bartackers and automated sewing systems. Our machines have also become renowned in the non-apparel sector, supplying such industries as automotive, upholstery, marine, industrial fabrics, footwear, leather products and home textiles.

Software solutions such as **JaNets (Juki Advanced Network Systems)** is the next frontier of sewing innovation and aims to bring your production into the future with interlinked machines and data to make analytical decisions.

As well as our extensive range of high quality industrial sewing machines **Juki** produce machines for the semi-professional and home-use market with our home sewers and surgers establishing themselves as some of the most popular and reliable in the market.

We are very proud of our historically strong distribution network across Europe and throughout the rest of the world. From **Juki Central Europe's offices in Warsaw** and through our representative offices we are able to serve the entire extended European market and North Africa. Through our carefully selected distributors we are able to combine knowledge and specific geographical market experience to ensure the best sewing solutions are available to

customers. Leveraging both our own expertise as well as that of our distributors we are able to provide insights and assistance that can improve end users productivity and quality.

Here in **Juki Central Europe** we constantly have one eye on the future and are looking to improve not only our own business but that of our customers and anyone who uses a **Juki** sewing machine. Our products are developed and manufactured with a consumer viewpoint in-mind at all times and it is our goal to build strong, lasting customer relationships. We will continue to provide products and services by taking our customers' needs and desires into account, by treating our customers as partners, through which we will create value together.

**Juki** was founded in 1938 when nearly 900 independent machinery manufactures came together to form the "TOKYO JUKI MANUFACTURERS ASSOCIATION". It wasn't until 1943 that this association was reorganized into a joint stock corporation. In this time Juki focused on other production types but in 1947 we produced our first sewing machine for the household market. This was followed by the first Juki industrial sewing machine in 1953 and decades of industry dominance thereafter. Juki has been at the forefront of sewing machine innovation over its lifetime with many of our advancements being adopted industry wide. To name just a few of our more famous improvements: the single-axis rotational thread take-up (1957), automatic Thread Trimmer (1969), pick-and-placer (1987), automatic bobbin thread feeder (1997), multifunctional machine digitalization (2015). This is just one milestone for Juki and we look forward to continuing our journey far into the future.



**JUKI CENTRAL EUROPE WOULD LIKE TO INVITE YOU TO OUR NON-SEWING SHOWROOM!**

The specialized showroom is a one-stop shop for all the new bonding, welding, press and industrial printing machines Juki Central Europe is now able to offer.

Now that the full range of solutions set up and available to use **in one place** it is the perfect place for you to test out the machines and see what they can do to give an edge to your production process. We have our resident experts on hand to provide detailed explanation and training you can be sure that a visit will be as valuable as possible. With these solutions testing your materials is key and we are able to perform these tests ahead of time again ensuring you will get the most out of your visit.



**WHAT IS A SMART FACTORY?**

IT IS VISUALISED

IT IS CONNECTED



**JUKI SOLUTIONS**

**01 AUTOMATIZATION**



Robot Sewing System

**02 DIGITALIZATION**



Digital Control

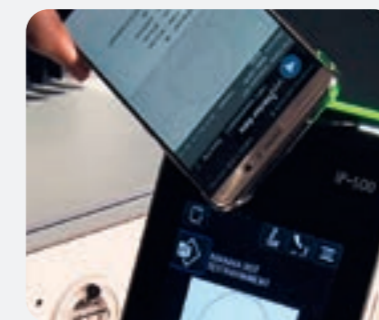
**03 NETWORKING**



Production Data Collection



Automatic Guided Vehicle



Two-way Communication



Production Output Machine Operation Rate

## INTRO

Depending on the function and process required by a factory there are different methods of bonding that achieve different results or seams. This technology can be used as a replacement for traditional stitch's (attaching fabric to fabric) but also to improve normal stitched seams strength and durability (sealing).

Creation of seams is carried out by a number of different methods but in all process one piece of fabric is fused to another piece. Sealing of seams uses special tape applied over an existing seam (either stitched or bonded) to make it stronger or waterproof.



### Tape Bonding / Seam Sealing

The hot air activates the adhesive of the specialized bonding tape fusing the tape to the fabric. Tape can also be applied on top of normal stitched seams to make them waterproof and more durable.



JEUX AI-107 spec A-NNN



### Ultrasonic Welding

Ultrasonic vibration causes the material to heat up and fuse together. A ultrasonic vibration from the horn cause mechanical stress within the materials that release thermal energy softening the points of contact and bonding the material together. Bonding only takes place at the points of contact between the horn and anvil. Polyester, nylon, polypropylene, polyethylene, PVC, urethane, saran, EVA, and surlyn can all be bonded ultrasonically.

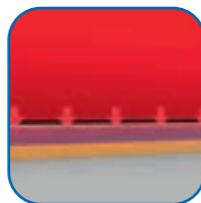


JEUX US-511



### Press Bonding

This uses both a hot and a separate cold plate to create a bond; it is capable of being used to fuse fabric to fabric (attaching) or with join with tape (sealing). Firstly the hot plate is applied to the product and pressure and heat are exerted. This causes the fabric to fuse or bond together (if tape is being used it melts). Secondly the cold plate is applied and this exerts even more pressure on the now melted seam and cools it simultaneously solidifying the bond.



JEUX CS-694



**TAPE BONDING / SEAM SEALING**

## JEUX AI-002

Post-Bed, Seam Sealing Machine with Differential Speed, Memory Function and 3D Electronic Nozzle Positioning System

### KEY FEATURES

- Big colour touch panel
- 40 programs memory
- USB data interface
- 3D Electronic nozzle positioning system
- Differential speed top / bottom roller
- Variable speed seam sealing
- Digital tensioning device
- Multi-language support
- Data memory bank

Model name	JEUX AI-002
Power Supply	AC 220 V, 50/60 Hz, 1ϕ
Power Consumption	3600 W
Compressed Air	> 0.4 MPa
Maximum Sealing Speed	18 m/min
Maximum Temperature	800°C
Nozzle Unit	22 mm
Upper Roller Width	25.4 mm
Lower Roller Width	31 mm
Dimensions	1200 x 660 x 1800 mm (LxWxH)
Net Weight	130 kg
Optional Roller	8-30 mm

Possible specifications: A, B, C, D, F, G, I  
\*For ordering options please see page 15



JEUX AI-002 spec A-NNN

## JEUX AI-101-IRJ

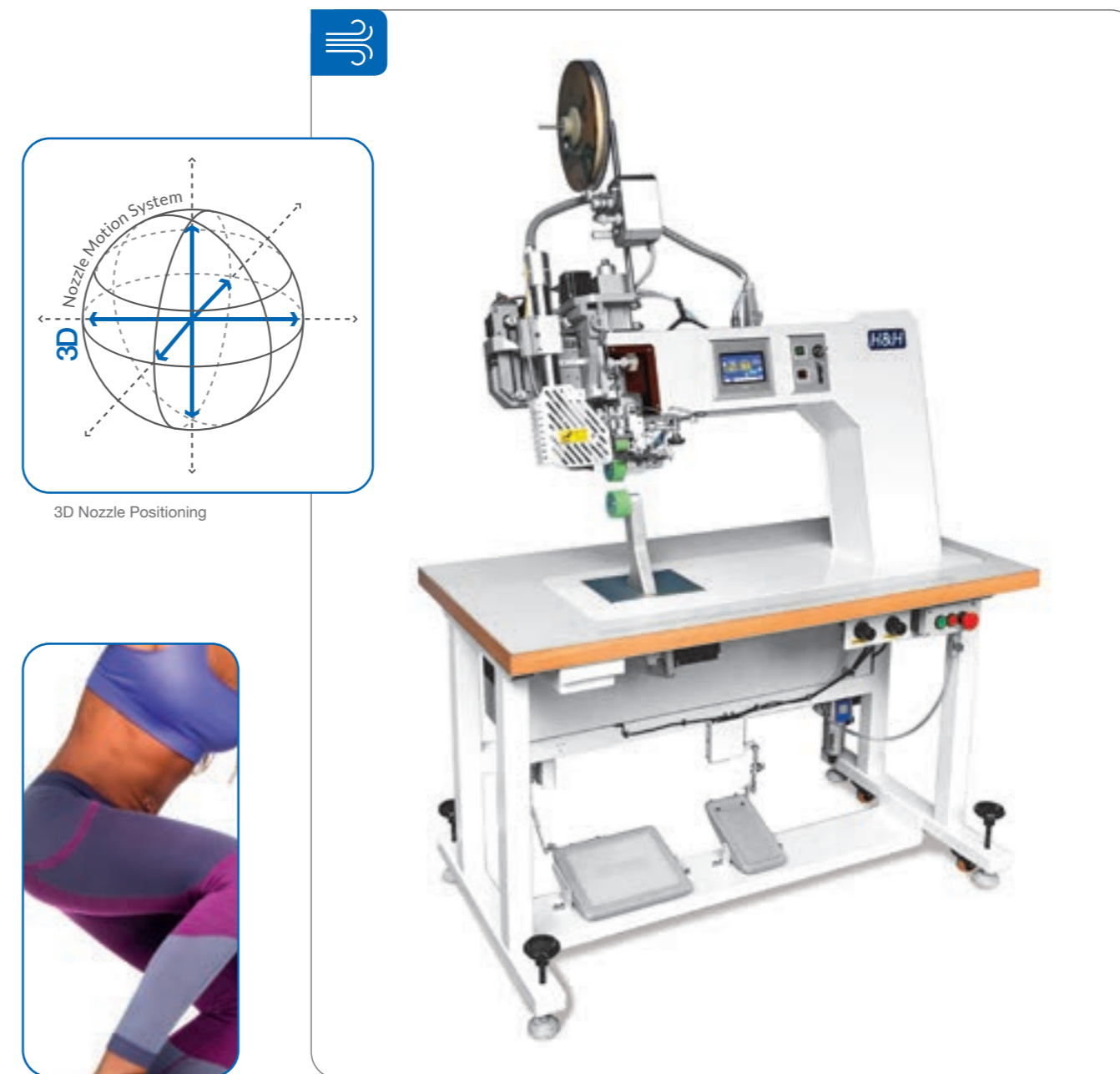
Post-Bed, Seam Sealing Machine with Differential Speed, Memory Function, 3D Electronic Nozzle Positioning System and Tape Heating Temperature Controller

### KEY FEATURES

- 3D electronic nozzle positioning system
- Tape heating temperature sensor
- Differential speed top / bottom roller
- Variable speed seam sealing
- Color touch screen interface
- Digital tensioning device
- Multi-language software

Model name	JEUX AI-101-IRJ
Power Supply	AC 220 V, 50/60 Hz, 1ϕ
Heat Power	3600 W
Compressed Air	> 0.4 MPa
Maximum Sealing Speed	18 m/min
Maximum Temperature	800°C
Nozzle Unit	22 mm
Upper Roller Width	25.4 mm
Lower Roller Width	31 mm
Dimensions	1200 x 750 x 1800 mm (LxWxH)
Net Weight	160 kg
Optional Roller	8-30 mm

Possible specifications: A, B, I  
\*For ordering options please see page 15



JEUX AI-101

### JEUX AI-107

Post-Bed, Seam Sealing Machine with Differential Speed and Memory Function

#### KEY FEATURES

- Differential speed top / bottom roller
- Colour touch screen interface
- Digital tensioning device
- Duplex nozzle action

Model name	JEUX AI-107
Power Supply	AC 220 V, 50/60 Hz, 1ϕ
Power Consumption	3600 W
Compressed Air	> 0.4 MPa
Maximum Sealing Speed	18 m/min
Maximum Temperature	800°C
Nozzle Unit	22 mm
Upper Roller Width	25.4 mm
Lower Roller Width	31 mm
Dimensions	1200 x 750 x 1800 mm (LxWxH)
Net Weight	150 kg
Optional Roller	8-30 mm

Possible specifications: A, D, I  
\*For ordering options please see page 15



JEUX AI-107 spec A-NNN

### JEUX AI-118

Post-Bed, Seam Sealing Machine with Differential Speed

#### KEY FEATURES

- Affordable price
- Digital tape feeder (tape tension control)
- Differential speed top/bottom roller
- Digital air pressure display
- Color touch screen interface
- Multi-language software
- USB port
- Easy settings adjustment on big panel

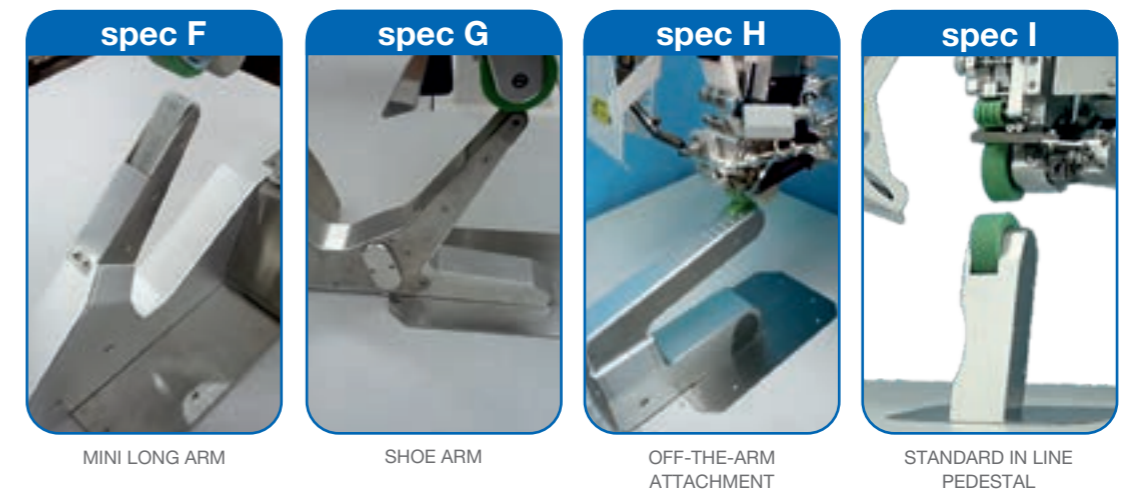
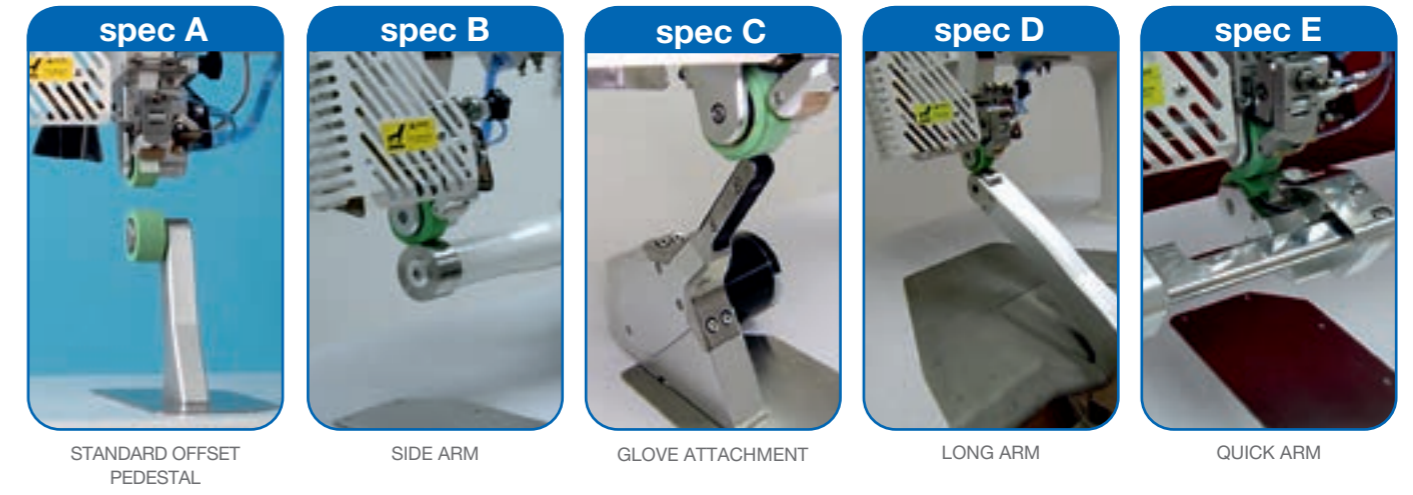
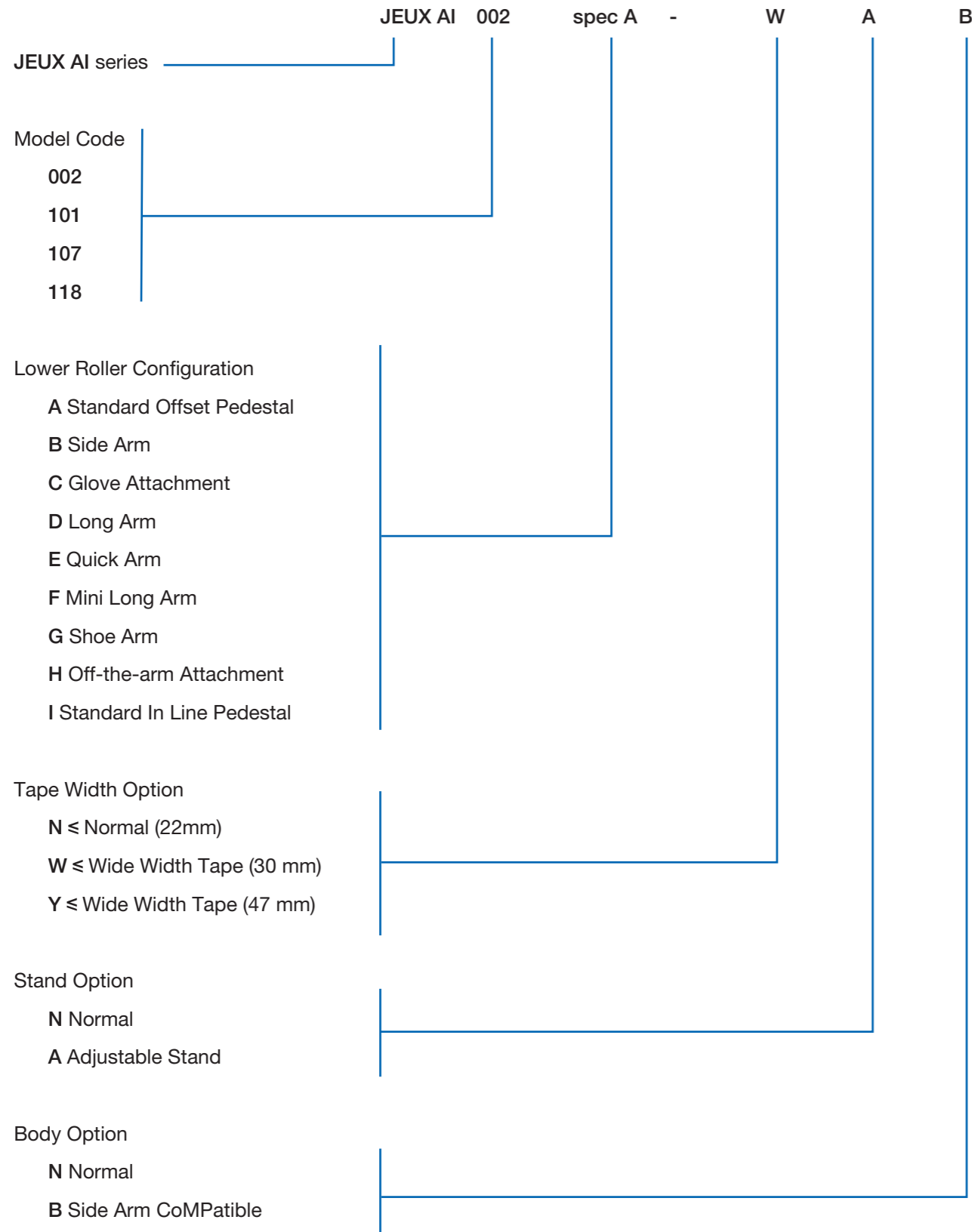
Model name	JEUX AI-118
Power Supply	AC 220 V, 50/60 Hz, 1ϕ
Power Consumption	3600 W
Compressed Air	> 0.4 MPa
Maximum Sealing Speed	24 m/min.
Maximum Temperature	800°C
Nozzle Unit	22 mm
Upper Roller Width	25.4 mm
Lower Roller Width	31 mm
Dimensions	1200 x 750 x 1700 mm (LxWxH)
Net Weight	130 kg
Optional Roller	10-31 mm

Possible specifications: A, I  
\*For ordering options please see page 15



JEUX AI-118

SELECTION GUIDE FOR JEUX AI-SERIES



Classified	Item	JEUX AI-002	JEUX AI-101	JEUX AI-107	JEUX AI-118
Features	Power save mode	•	•	•	•
Features	Heat press mode	•	•	•	•
Features	Start / stop seal skip prevention	•	•	•	•
Features	Auto micro reverse	•	•	•	•
Features	Individual program for start / middle / end	•	•	•	•
Features	Error message	•	•	•	•
Features	Working lamp	•	•	•	•
Features	Real time variable speed sealing				
Features	Production statistics	•	•	•	•
Features	Real time clock	•	•		•
Features	Roller cooler	•	•	•	•
Features	Temporary stop pressure release				
Features	Fix length mode	•	•	•	•
Features	USB Disk	•	•		•
Features	Digital pressure indication	•	•	•	•
Control	Multi-function foot switch	•	•	•	
Control	Control pedal number	2	2	2	3
Control	Password protection	•	•	•	•
Control	Touch panel control	•	•	•	•
Control	No. of memory	40	40		5
Control	No. of parameter	44	44	28	21



Classified	Item	JEUX AI-002	JEUX AI-101	JEUX AI-107	JEUX AI-118
Control	Parameter lock	•	•	•	•
Control	No. of controller	2	1	1	1
Control	Temperature deviation (°C)	1	1	1	1
Control	Emulation mode				•
Nozzle	Movement type	Digital Motor	Digital Motor	Pneumatic	Pneumatic
Nozzle	Position adjustment type	Digital Motor	Digital Motor	Mechanical	Mechanical
Nozzle	Movement dimensions	3 Axis	3 Axis	2 Axis	1 Axis
Nozzle	Angle adjustment	•	•	•	•
Nozzle	Digital in / out timing adjustment	•	•		
Nozzle	Oscillation mode	•	•		
Nozzle	Parking position	•	•	•	
Nozzle	Hovering position	•	•	•	
Nozzle	Soft landing movement	•	•		
Nozzle	Calibration mode	•	•		•
Cutter	Hand cut mode	•	•	•	•
Cutter	Foot cut mode	•	•	•	•
Cutter	Precision digital tape feeder	•	•	•	•
Tensioner	Type	Digital	Digital	Digital	Digital
Tensioner	Tape end alarm	•	•	•	•
Tensioner	Tape metering function	•	•	•	•
Transmission	Transmission type	Timing Belt	Timing Belt	Timing Belt	Timing Belt
Transmission	No. of motor	7	6	3	3
Transmission	Speed control	Digital	Digital	Digital	Digital
Transmission	Tolerance	< 1%	< 1%	< 1%	< 1%
Transmission	Changeable bottom roller diameter	•	•		
Transmission	Differential speed top / bottom motor	•	•	•	•
Transmission	Manual reverse rotation	•	•	•	•
Construction	Slant body	•	•	•	•
Construction	Body type	Sheet Metal	Sheet Metal	Sheet Metal	Sheet Metal
Lower Roller Configuration	Spec A - standard offset pedestal	•	•	•	•
Lower Roller Configuration	Spec B - side arm	•	•		
Lower Roller Configuration	Spec C - glove attachment	•	•		•
Lower Roller Configuration	Spec D - long arm	•	•	•	
Lower Roller Configuration	Spec E - quick arm		•		
Lower Roller Configuration	Spec F - mini long arm	•	•		
Lower Roller Configuration	Spec G - shoe arm	•	•		
Lower Roller Configuration	Spec I - standard in line pedestal	•		•	•
Lower Roller Configuration	Spec J - slanted pole			•	
Option	Wide width tape (30 mm)	•	•		
Option	Adjustable stand	•			
Option	Side arm compatible	•	•		
Option	Seam allowance guide	•	•	•	
Option	Narrow tape guide	•	•	•	

## JEUX SF-806

### Sewfree Tape Laydown with Ultrasonic Fabric Edge Trimmer

- Not fraying at the edge
- Workable on 2D and 3D construction
- Both straight and curve seam
- Perfect for knit and lycra
- Precise trimming
- Software upgradable

#### KEY FEATURES

- 28 kHz quiet operation
- Differential speed top / bottom roller
- Color touch screen interface
- Digital tensioning device
- Adjustable cutter speed
- USB data interface

Model name	JEUX SF-806
Power Supply	AC 220 V, 50/60 Hz, 1Ø
Power Consumption	800 W
Compressed Air	> 0.4 MPa
Maximum Sealing Speed	9 m / min
Maximum Temperature	800°C
Upper Roller Width	25,4 mm
Lower Roller Width	25,4 mm
Dimensions	1200 x 670 x 1420 mm (LxWxH)
Net Weight	128 kg



JEUX SF-806

## JEUX SF-816

Post-Bed Tape Laydown with Fabric Edge Trimmer

- Workable on 2D and 3D construction
- Both straight and curve seam
- Perfect for knit and lycra
- Precise trimming
- Software upgradable

### KEY FEATURES

- Differential speed top / bottom roller
- Color touch screen interface
- Digital tensioning device
- Adjustable cutter speed
- Convertible platform

Model name	JEUX SF-816
Power Supply	AC 220 V, 50/60 Hz, 1⌀
Power Consumption	3600 W
Compressed Air	> 0.4 MPa
Maximum Sealing Speed	9 m / min
Maximum Temperature	800°C
Nozzle Unit	12 mm
Upper Roller Width	15 mm
Lower Roller Width	15 mm
Dimensions	1200 x 700 x 1800 mm (LxWxH)
Net Weight	140 kg



JEUX SF-816

## JEUX SF-828

Multifunctional Post-Bed Bonding Machine

- Workable on 2D and 3D construction
- Both straight and curve seam
- Stable temperature
- Stretch fabric ready

### KEY FEATURES

- Multifunctional: seam-sealing, overlapping, hemming and binding operations
- Multi-heater ensures adhesive strength
- Differential speed top / bottom roller
- Color touch screen interface
- Automatic tensioning device

Model name	JEUX SF-828
Power Supply	AC 220 V, 50/60 Hz, 1⌀
Heater Power	2680 W
Compressed Air	> 0.4 MPa
Maximum Sealing Speed	5 m / min
Maximum Nozzle Temperature	350°C
Maximum Roller Temperature	250°C
Working Width	6 ~ 20 mm
Dimensions	1220 x 700 x 1450 mm (LxWxH)
Net Weight	130 kg



JEUX SF-828

### QHP-A08

Post-Bed, Seam-Sealing Machine with Differential Speed and Variable Cylinder / Post Arm

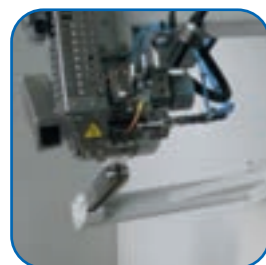
#### KEY FEATURES

- Shape of air delivery system and rollers make this suitable for curved objects
- The machine arm can register the movements of the operator during bonding and adjust the angle accordingly
- Angle adjustment ensure a smooth and easy operation
- Air temperature can be easily adjusted through the operational interface

Model name	QHP-A08
Power Required	1P/ 200, 220, 240 V 50/60 Hz
Power Consumption	Abt. 2.3 kVA
Nozzle Heater	2.0 kW (200 V)
Nozzle Air Temperature	Up to 750°C
Feed Speed	Max: 10 m / min
Upper Roller	Silicon rubber (30 mm)
Lower Roller	For small diameter tape sealing
Air Consumption	100 liter / min
Arm Type	Variable moving type



Hot air tape bonding machine, variable cylinder / post arm



QHP-A08



**ULTRASONIC WELDING**

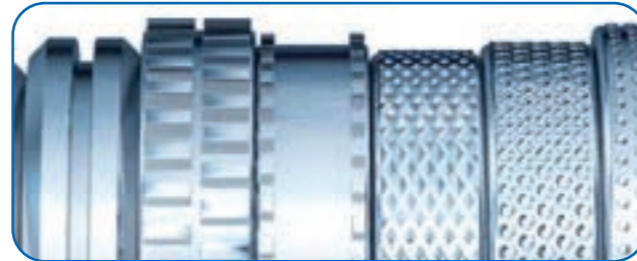
## JEUX 7510

Flat Bed Ultrasonic Machine

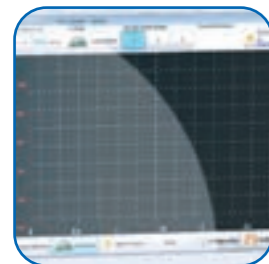
### KEY FEATURES

- A wide range of anvil wheels allows embossing of any profile or welding structure
- No compressed air required
- Newly developed user-interface and custom software
- Cutting and welding functions possible (S Type)
- Flat bed allows for easy and large working area
- Up to 12 m / min welding speed possible
- Automatic roller pressure adjustment

Model name	JEUX 7510-S	JEUX 7510-T
Sonotrode	Steel	Titanium
Frequency	35 kHz	
Sonotrode Standard Size	10 mm	
Maximum welding speed	12 m/min	
User-Interface	7" touch screen	
Power Supply	230 V, 50 Hz	



JEUX 7510



## JEUX US-511

Ultrasonic Rotary Welding Machine

### KEY FEATURES

- Automatic Frequency Tracking Ultrasonic System 28 kHz
- Digital Pressure Indicator
- Digital Ultrasonic Frequency Level Indicator
- Programmable Seam Length Programs
- Extra Roller Pressure Controlled From Pedal
- Settings Protection By External Key
- Color Touch Screen Interface
- High Max. Welding Speed
- Suitable For Stretchy Fabrics
- Working On Straight And Curvy Seams
- Customized Welding Wheels For Various Operations
- Affordable Price



Anvil and Sonotrode

Model name	JEUX US-511
Power Supply	AC 220 V, 50/60 Hz, 1Φ
Power Consumption	700 W
Ultrasonic Frequency	28 kHz
Horn Dimension	50 mm
Maximum Welding Speed	20 m / min
Dimensions	1200 x 650 x 1230 mm (LxWxH)
Net Weight	108 kg



JEUX US-511

### OPTIONAL ITEMS

Item Code		
JJBHH2XP	H2XP US-511 CUSTOM MADE ROLLER	
JJBHH2XQ	H2XQ US-511 CUSTOM MADE ROLLER	
JJBHH3D	H3D US-511 CUSTOM MADE ROLLER	
JJBHH3X	H3X US-511 CUSTOM MADE ROLLER	
JJBHH4X	H4X US-511 CUSTOM MADE ROLLER	
JJBHH20H	H20H US-511 CUSTOM MADE ROLLER	
JJBHH40	H40H US-511 CUSTOM MADE ROLLER	

## JEUX US-512

Ultrasonic Rotary Welding Machine

### KEY FEATURES

- Automatic Frequency Tracking Ultrasonic System 35 kHz
- Digital Pressure Indicator
- Programmable Seam Length Programs
- Extra Roller Pressure Controlled From Pedal
- Settings Protection By External Key
- Color Touch Screen Interface
- Suitable For Stretchy Fabrics
- Working On Straight And Curvy Seams
- Customized Welding Wheels For Various Operations
- Affordable Price

Model name	JEUX US-512
Power Supply	AC 220 V, 50/60 Hz, 1Φ
Power Consumption	700 W
Ultrasonic Frequency	35 kHz
Horn Dimension	11 mm
Maximum Welding Speed	8 m / min
Dimensions	1180 x 610 x 1220 mm (LxWxH)
Net Weight	120 kg



Anvil and Sonotrode



JEUX US-512

## LWU-3015-4BT

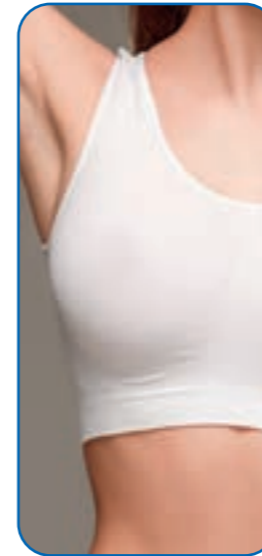
Ultrasonic Welding Machine with Variable Cylinder / Post Arm

### KEY FEATURES

- The machine uses ultrasonic vibrations to heat fabric, fusing it together
- This machine creates seamless finishing's that are comfortable to wear and allow for high stretchiness
- Perfectly suited for non-woven fabric

Model name	LWU 3015-4BT
Power Required	1P 200 V, 50/60 Hz
Power Consumption	1,0 kVA
Power Output	Max. 600 W
Oscillating Frequency	30 kHz
Feed Speed	0-8.0 m / min (minimum 0,1m / min)
Motor	2 Stepping Motors
Presser	Air Cylinder*
Others	PLC Control / LCD Touch Panel / Control Horn Cooling Device / Air Pressure Detector / Welding Roller Cooling & Blowing Device Touch sensor

\*air compressor is required



LWU-3015-4BT



## HEAT PRESSING

## HEAT PRESSING

### JEUX CS-651

#### Automatic Cuff Press Machine

- Single or double cuff mode
- Avoid overheating and skipping
- Separate left and right temperature control
- Digitally controlled rotating action
- Color touch screen interface
- Dual time shift mode

Model name	JEUX CS-651
Power Supply	AC 220 V, 50/60 Hz, 1Ø
Heater Power	1500 W
Compressed Air	> 0.4 MPa
Maximum Temperature	260°C
Timing Range	1-999 Seconds
Upper Mold Area	120 x 80 x R50 mm
Lower Mold Area	120 x 73 x R50 mm
Net Weight	650 x 380 x 1120 mm (LxWxH)
Net Weight	68 kg



JEUX CS-651 spec A-A2R2-120073R050

## JEUX CS-652

Pneumatic Flat Press Machine

- Consistent temperature
- Uniform pressure
- Simple to use
- Good for all fabric
- Vertical press motion
- Preset heating time
- Safety lever

### KEY FEATURES

- Both hands push button activation for added safety
- Flexible changeable lower platform
- Press travel limiting device
- Optional lighting system
- Foot pedal activation

Model name	JEUX CS-652
Power Supply	AC 220 V, 50/60 Hz, 1Φ
Heater Power	1000 W
Compressed Air	> 0.4 MPa
Maximum Temperature	260°C
Timing Range	1-999 Seconds
Upper Mold Area	206 x 174 mm
Lower Mold Area	203 x 152 mm
Dimensions	520 x 380 x 1050 mm (LxWxH)
Net Weight	45 kg
Extra Lower Mold	150 x 50, Ø68 mm



JEUX CS-652 spec A-A1A1-20015

Provided as standard



Ø 68 mm



150x50 mm



JEUX CS-652 spec.A-A1T2-20015

## JEUX CS-653

Pneumatic Flat Press Machine

- PLC controlled
- Consistent temperature
- Uniform pressure
- Simple to use

### KEY FEATURES

- Both hands push button activation for added safety
- Flexible changeable lower platform
- Foot pedal or handle bar activation
- Top plate swing out design
- Dual time shift mode
- Vertical press motion
- Key locking function
- Dual counters

Model name	JEUX CS-653
Power Supply	AC 220 V, 50/60 Hz, 1Φ
Heater Power	1000 W
Compressed Air	> 0.4 MPa
Maximum Temperature	260°C
Timing Range	1-999 Seconds
Upper Mold Area	206 x 174 mm
Lower Mold Area	203 x 152 mm
Dimensions	450 x 560 x 910 mm (LxWxH)
Net Weight	50 kg
Extra Lower Mold	150 x 50, Ø68 mm



JEUX CS-653 spec A-D1M2-020015

Provided as standard



Ø 68 mm



150x50 mm



JEUX CS-653 spec A-D1M2-020015

## JEUX CS-654

Pneumatic Flat Press Machine

- Color touch screen control panel
- PLC controlled
- Consistent temperature
- On screen pressure reading

### KEY FEATURES

- Both hands push button activation for added safety
- Digital pressure and temperature interlock
- Selectable foot pedal activation
- Key locking supervisor mode
- Dual time shift mode
- Self leveling platform
- Dual counters
- Trend display

Model name	JEUX CS-654
Power Supply	AC 220 V, 50/60 Hz, 1Φ
Heater Power	3600 W
Compressed Air	> 0.4 MPa
Maximum Temperature	260°C
Timing Range	1-999 Seconds
Upper Mold Area	320 x 320 mm
Lower Mold Area	300 x 300 mm
Dimensions	460 x 700 x 1100 mm (LxWxH)
Net Weight	74 kg



JEUX CS-654 spec A-D2A1-038008

## JEUX CS-655

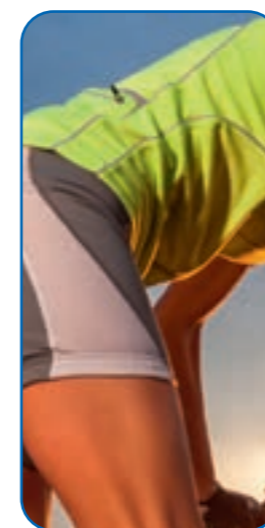
Pneumatic Flat Press Machine

- Color touch screen control panel
- PLC controlled
- Consistent temperature
- On screen pressure reading

### KEY FEATURES

- Both hands push button activation for added safety
- Digital pressure and temperature interlock
- Selectable foot pedal activation
- Key locking supervisor mode
- Dual time shift mode
- Self leveling platform
- Dual counters
- Trend display

Model name	JEUX CS-655
Power Supply	AC 220 V, 50/60 Hz, 1Φ
Heater Power	1500 W
Compressed Air	> 0.4 MPa
Maximum Temperature	260°C
Timing Range	1-999 Seconds
Upper Mold Area	305 x 305 mm
Lower Mold Area	300 x 300 mm
Dimensions	510 x 660 x 1100mm (LxWxH)
Net Weight	90 kg



JEUX CS-655 spec A-A1A1-030030



JEUX CS-655 spec A-A 1 T2-030030



## JEUX CS-658

Pneumatic Flat Heat and Cool Press Machine

- Color touch screen control panel
- Consistent temperature
- Uniform pressure
- Software upgradable
- Good for all fabric
- PLC controlled

### KEY FEATURES

- Both hands push button activation for added safety
- Digital pressure and temperature interlock
- Flexible changeable lower platform
- Selectable foot pedal activation
- Key locking supervisor mode
- Dual time shift mode
- Top plate swing out design
- Dual counters & trend display

Model name	JEUX CS-658
Power Supply	AC 220 V, 50/60 Hz, 1Φ
Heater Power	1000 W
Compressed Air	> 0.4 MPa
Maximum Temperature	260°C
Timing Range	1-999 Seconds
Upper Mold Area	380 x 150 mm
Lower Mold Area	380 x 80 mm
Dimensions	710 x 780 x 830 mm (LxWxH)
Net Weight	93 kg



water circulator provided as standard



optional chiller



JEUX CS-658 spec A-D2A1-038008

## JEUX CS-661

Pneumatic Flat Heat and Cool Press Machine

- Color touch screen control panel
- Software upgradable
- Good for all fabric
- PLC controlled

### KEY FEATURES

- Both hands push button activation for added safety
- Digital pressure and temperature interlock
- Selectable foot pedal activation
- Key locking supervisor mode
- Dual time shift mode
- Self leveling platform
- Dual counters
- Trend display

Model name	JEUX CS-661
Power Supply	AC 220 V, 50/60 Hz, 1Φ
Heater Power	1000 W
Compressed Air	> 0.4 MPa
Maximum Temperature	260°C
Timing Range	1-999 Seconds
Upper Mold Area	340 x 100 mm
Lower Mold Area	300 x 95 mm
Dimensions	510 x 690 x 1400 mm (LxWxH)
Net Weight	110 kg
Extra Lower Mold	150 x 50, Ø68



water circulator provided as standard



optional chiller

Provided as standard



Ø 68 mm



150x50 mm



JEUX CS-661 spec A-F2A1-030010

## JEUX CS-662

### Pneumatic Flat Press Machine

- Color touch screen control panel
- PLC controlled
- 3 Zones temperature control
- Even temperature, typical 1°C tolerance across bed
- On screen pressure reading

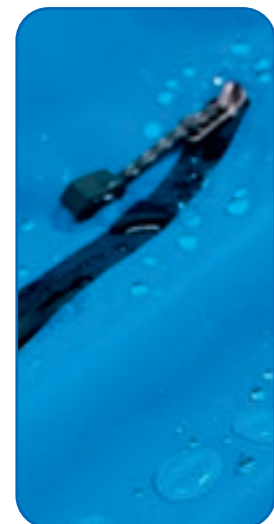
#### KEY FEATURES

- Both hands push button activation for added safety
- Digital pressure and temperature interlock
- Vacuum platform for precise positioning
- Selectable foot pedal activation
- Key locking supervisor mode
- Dual time shift mode
- Dual counters
- Trend display

Model name	JEUX CS-662
Power Supply	AC 380 V, 50/60 Hz, 1Φ
Heater Power	7500 W
Compressed Air	> 0.4 MPa
Maximum Temperature	260°C
Timing Range	1-999 Seconds
Upper Mold Area	1250 x 530 mm
Lower Mold Area	1200 x 500 mm
Dimensions	1350 x 950 x 1470 mm (LxWxH)
Net Weight	590 kg



JEUX CS-662 spec V-A1A1-120050



## JEUX CS-663

### Pneumatic Curve Heat and Cool Press Machine

- Color touch screen control panel
- Consistent temperature
- Uniform pressure
- Software upgradable
- Good for all fabric
- PLC controlled

#### KEY FEATURES

- Both hands push button activation for added safety
- Digital pressure and temperature interlock
- Flexible changeable lower platform
- Selectable foot pedal activation
- Key locking supervisor mode
- Dual time shift mode
- Top plate swing out design
- Dual counters & trend display

Model name	JEUX CS-663
Power Supply	AC 220 V, 50/60 Hz, 1Φ
Heater Power	600 W
Compressed Air	> 0.4 MPa
Maximum Temperature	260°C
Timing Range	1-999 Seconds
Upper Mold Area	148 x 40 x R83 mm
Lower Mold Area	130 x 40 x R83 mm
Dimensions	710 x 780 x 830 mm (LxWxH)
Net Weight	78 kg



JEUX CS-663 spec A-D2A 1-130040R083



water circulator provided as standard



optional chiller

## JEUX CS-664

Pneumatic Flat Press Machine

- Color touch screen control panel
- Software upgradable
- Good for all fabric
- PLC controlled

### KEY FEATURES

- Both hands push button activation for added safety
- Digital pressure and temperature interlock
- Unique motorized heat / cool changeover
- Selectable foot pedal activation
- Key locking supervisor mode
- Dual time shift mode
- Dual counters
- Trend display

Model name	JEUX CS-664
Power Supply	AC 220 V, 50/60 Hz, 1Ø
Heater Power	1000 W
Compressed Air	> 0.4 MPa
Maximum Temperature	260°C
Timing Range	1-999 Seconds
Upper Mold Area	340 x 100 mm
Lower Mold Area	300 x 95 mm
Dimensions	510 x 690 x 1400 mm (LxWxH)
Net Weight	110 kg
Extra Lower Mold	150 x 50, Ø68

Provided as standard



Ø 68 mm



150x50 mm



JEUX CS-664 spec A-D1A1-028016



swing off position

## JEUX CS-665

Pneumatic Flat Press Machine

- Color touch screen control panel
- PLC controlled
- Consistent temperature
- On screen pressure reading

### KEY FEATURES

- Both hands push button activation for added safety
- Digital pressure and temperature interlock
- Selectable foot pedal activation
- Key locking supervisor mode
- Dual time shift mode
- Self leveling platform
- Dual counters
- Trend display

Model name	JEUX CS-665
Power Supply	AC 220 V, 50/60 Hz, 1Ø
Heater Power	1600 W
Compressed Air	> 0.4 MPa
Maximum Temperature	260°C
Timing Range	1-999 Seconds
Upper Mold Area	610 x 130 mm
Lower Mold Area	600 x 120 mm
Dimensions	715 x 720 x 1124 mm (LxWxH)
Net Weight	90 kg



JEUX CS-665 spec A-A1A1-060012

## JEUX CS-666

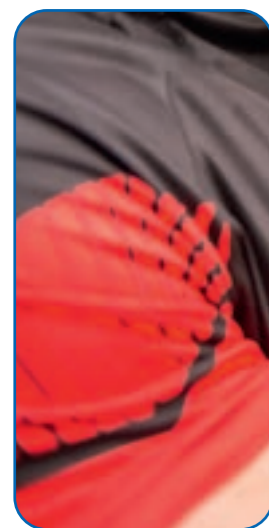
### Pneumatic Flat Press Machine

- Consistent temperature
- Uniform pressure
- Simple to use
- Good for all fabric
- Extremely affordable

#### KEY FEATURES

- Both hands push button activation for added safety
- Press travel limiting device
- Foot pedal activation
- Vertical press motion
- Preset heating time
- Safety lever

Model name	JEUX CS-666
Power Supply	AC 220 V, 50/60 Hz, 1Φ
Heater Power	1600 W
Compressed Air	> 0.4 MPa
Maximum Temperature	260°C
Timing Range	1-999 Seconds
Upper Mold Area	610 x 130 mm
Lower Mold Area	600 x 120 mm
Dimensions	715 x 720 x 1124 mm (LxWxH)
Net Weight	90 kg



JEUX CS-666 spec A-A1A1-060012

## JEUX CS-667

### Pneumatic Curve Press Machine

- Color touch screen control panel
- PLC controlled
- Consistent temperature
- On screen pressure reading

#### KEY FEATURES

- Both hands push button activation for added safety
- Digital pressure and temperature interlock
- Selectable foot pedal activation
- Key locking supervisor mode
- Dual time shift mode
- Dual counters
- Trend display

Model name	JEUX CS-667
Power Supply	AC 220 V, 50/60 Hz, 1Φ
Heater Power	1200 W
Compressed Air	> 0.4 MPa
Maximum Temperature	260°C
Timing Range	1-999 Seconds
Upper Mold Area	302 x 95 x R191 mm
Lower Mold Area	300 x 95 x R191 mm
Dimensions	400 x 750 x 1215 mm (LxWxH)
Net Weight	70 kg

Provided as standard



Ø 68 mm



150x50 mm



JEUX CS-667 spec V-A1A1-300095R191

## JEUX CS-668

### Pneumatic Curve Press Machine

- Consistent temperature
- Uniform pressure
- Simple to use
- Good for all fabric
- Extremely affordable

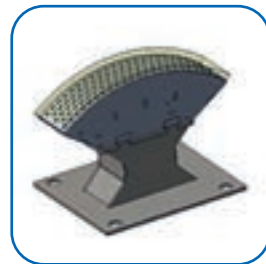
#### KEY FEATURES

- Both hands push button activation for added safety
- Press travel limiting device
- Foot pedal activation
- Vertical press motion
- Preset heating time
- Safety lever

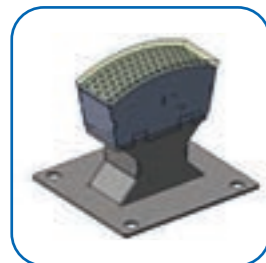
Model name	JEUX CS-668
Power Supply	AC 220 V, 50/60 Hz, 1Φ
Heater Power	1200 W
Compressed Air	> 0.4 MPa
Maximum Temperature	260°C
Timing Range	1-999 Seconds
Upper Mold Area	302 x 95 x R191 mm
Lower Mold Area	300 x 95 x R191 mm
Dimensions	400 x 750 x 1215 mm (LxWxH)
Net Weight	70 kg



OPTIONAL



middle mold



small mold

JEUX CS-668 spec A-A1A1-300095R191

## JEUX CS-669

### Pneumatic Flat Press Machine

- Color touch screen control panel
- PLC controlled
- Consistent temperature
- On screen pressure reading

#### KEY FEATURES

- Both hands push button activation for added safety
- Digital pressure and temperature interlock
- Selectable foot pedal activation
- Key locking supervisor mode
- Dual time shift mode
- Self leveling platform
- Dual counters
- Trend display

Model name	JEUX CS-669
Power Supply	AC 220 V, 50/60 Hz, 1Φ
Heater Power	2600 W
Compressed Air	> 0.4 MPa
Maximum Temperature	260°C
Timing Range	1-999 Seconds
Upper Mold Area	420 x 420 mm
Lower Mold Area	400 x 400 mm
Dimensions	525 x 770 x 1145 mm (LxWxH)
Net Weight	120 kg



JEUX CS-669 spec A-A1A1-040040

## JEUX CS-671

### Manual Flat Press Machine

- Consistent temperature
- Simple to use
- Good for all fabric

#### KEY FEATURES

- Top plate swing out design
- Vertical press motion
- Preset heating time
- Manual clamping device
- Timeout buzzer

Model name	JEUX CS-671
Power Supply	AC 220 V, 50/60 Hz, 1Φ
Heater Power	1000 W
Maximum Temperature	260°C
Timing Range	1-999 Seconds
Upper Mold Area	206 x 156 mm
Lower Mold Area	203 x 152 mm
Dimensions	450 x 550 x 600 mm (LxWxH)
Net Weight	36 kg
Extra Lower Mold	150 x 50, Ø68



JEUX CS-671 spec M-D1A1-020015



swing off position

Provided as standard



Ø 68 mm



150x50 mm

## JEUX CS-672

### Pneumatic Flat Press Machine

- Consistent temperature
- Uniform pressure
- Simple to use
- Good for all fabric

#### KEY FEATURES

- Press travel limiting device
- Top plate swing out design
- Foot pedal activation
- Vertical press motion
- Preset heating time
- Safety lever

Model name	JEUX CS-672
Power Supply	AC 220 V, 50/60 Hz, 1Φ
Heater Power	1500 W
Compressed Air	> 0.4 MPa
Maximum Temperature	260°C
Timing Range	1-999 Seconds
Upper Mold Area	305 x 305 mm
Lower Mold Area	300 x 300 mm
Dimensions	650 x 400 x 980 mm (LxWxH)
Net Weight	115 kg



JEUX CS-672 spec A-D1A1-030030

## JEUX CS-673

Pneumatic Flat Press Machine

- Consistent temperature
- Uniform pressure
- Simple to use
- Good for all fabric

### KEY FEATURES

- Top plate flip down design
- Foot pedal activation
- CoMPact body size
- Preset heating time

Model name	JEUX CS-673
Power Supply	AC 220 V, 50/60 Hz, 1Φ
Heater Power	1300 W
Compressed Air	> 0.4 MPa
Maximum Temperature	260°C
Timing Range	1-999 Seconds
Upper Mold Area	300 x 150 mm
Lower Mold Area	280 x 130 mm
Dimensions	380 x 520 x 465 mm (LxWxH)
Net Weight	35 kg
Extra Lower Mold	150 x 50, Ø68



Provided as standard



Ø 68 mm



150x50 mm

JEUX CS-673 spec A-S1A1-028013

## JEUX CS-674

Pneumatic Flat Heat and Cool Press Machine

- Consistent temperature
- Uniform pressure
- Simple to use
- Good for all fabric

### Key features

- Both hands push button activation for added safety
- Swinging heat / cool changeover
- Press travel limiting device
- Foot pedal activation
- Vertical press motion
- Preset heating time
- Safety lever

Model name	JEUX CS-674
Power Supply	AC 220 V, 50/60 Hz, 1Φ
Heater Power	1000 W
Compressed Air	> 0.4 MPa
Maximum Temperature	260°C
Timing Range	1-999 Seconds
Upper Mold Area	205 x 175 mm
Lower Mold Area	210 x 168 mm
Dimensions	430 x 580 x 850 mm (LxWxH)
Net Weight	6 kg
Extra Lower Mold	150 x 50, Ø68



water circulator provided as standard



optional chiller

JEUX CS-674 spec A-D2A 1-020015

## JEUX CS-675

### Pneumatic Flat Press Machine

- Consistent temperature
- Uniform pressure
- Simple to use
- Good for all fabric

#### KEY FEATURES

- Both hands push button activation for added safety
- Press travel limiting device
- Foot pedal activation
- Vertical press motion
- Preset heating time
- Safety lever

Model name	JEUX CS-675
Power Supply	AC 220 V, 50/60 Hz, 1Φ
Heater Power	3500 W
Compressed Air	> 0.4 MPa
Maximum Temperature	260°C
Timing Range	1-999 Seconds
Upper Mold Area	520 x 520 mm
Lower Mold Area	500 x 500 mm
Dimensions	580 x 860 x 1250 mm (LxWxH)
Net Weight	150 kg



JEUX CS-675 spec A-A1A1-050050

## JEUX CS-676

### Pneumatic Flat Press Machine

- Color touch screen control panel
- PLC controlled
- 6 Zones temperature control
- Even temperature, typical 2°C tolerance across bed
- On screen pressure reading

#### KEY FEATURES

- Both hands push button activation for added safety
- Digital pressure and temperature interlock
- Selectable foot pedal activation
- Key locking supervisor mode
- Dual time shift mode
- Dual counters
- Trend display

Model name	JEUX CS-676
Power Supply	AC 220 V, 50/60 Hz, 1Φ
Heater Power	12000 W
Compressed Air	> 0.4 MPa
Maximum Temperature	260°C
Timing Range	1-999 Seconds
Upper Mold Area	1250 x 830 mm
Lower Mold Area	1200 x 800 mm
Dimensions	1320 x 1300 x 1860 mm (LxWxH)
Net Weight	860 kg



JEUX CS-675 spec A-A1A1-120080 + TA-030



## JEUX CS-677

### Pneumatic Flat Press Machine

- PLC controlled
- Consistent temperature
- Uniform pressure
- Simple to use
- Good for all fabric

#### KEY FEATURES

- Both hands push button activation for added safety
- Independently heating of upper and lower
- Foot pedal activation
- Dual time shift mode
- Vertical press motion
- Key locking function
- Dual counters

Model name	JEUX CS-677
Power Supply	AC 220 V, 50/60 Hz, 1Φ
Heater Power	2000 W
Compressed Air	> 0.4 MPa
Maximum Temperature	260°C
Timing Range	1-999 Seconds
Upper Mold Area	320 x 90 mm
Lower Mold Area	320 x 90 mm
Dimensions	570 x 430 x 1500 mm (LxWxH)
Net Weight	75 kg



JEUX CS-677 spec B-A 1A1-032009

## JEUX CS-678

### Pneumatic Flat Press Machine

- Consistent temperature
- Uniform pressure
- Simple to use
- Good for all fabric

#### KEY FEATURES

- Both hands push button activation for added safety
- Digital pressure and temperature interlock
- Key locking supervisor mode
- Single hand operation mode
- Optional foot pedal
- Dual counters
- Trend display

Model name	JEUX CS-678
Power Supply	AC 220 V, 50/60 Hz, 1Φ
Heater Power	3500 W
Compressed Air	> 0.4 MPa
Maximum Temperature	260°C
Timing Range	1-999 Seconds
Upper Mold Area	520 x 520 mm
Lower Mold Area	500 x 500 mm
Dimensions	1100 x 1460 x 600 mm (LxWxH)
Net Weight	300 kg



JEUX CS-678 spec A-D1B2-050050

## JEUX CS-679

### Automatic Pick and Place Label Heat Press Machine

- Color touch screen control panel
- Software upgradable
- Good for all fabric
- PLC controlled

#### KEY FEATURES

- Both hands push button activation for added safety
- Selectable foot pedal activation
- Key locking supervisor mode
- Precise motorized positioning
- Automated label handling
- Self lock mode
- Dual counters
- Trend display

Model name	JEUX CS-679
Power Supply	AC 220 V, 50/60 Hz, 1Φ
Heater Power	600 W
Compressed Air	> 0.4 MPa
Maximum Temperature	260°C
Timing Range	1-999 Seconds
Upper Mold Area	130 x 130 mm
Lower Mold Area	110 x 110 mm
Dimensions	920 x 1150 x 92 mm (LxWxH)
Net Weight	115 kg



JEUX CS-679 spec A-A 1A1-011011

## JEUX CS-680

### Pneumatic Flat Press Machine

- Color touch screen control panel
- PLC controlled
- Consistent temperature
- Uniform pressure

#### KEY FEATURES

- Both hands push button activation for added safety
- Foot pedal or handle bar activation
- Dual time shift mode
- Top plate swing out design
- Vertical press motion
- Key locking function
- Dual counters
- Trend display

Model name	JEUX CS-680
Power Supply	AC 220 V, 50/60 Hz, 1Φ
Heater Power	1500 W
Compressed Air	> 0.4 MPa
Maximum Temperature	260°C
Timing Range	1-999 Seconds
Upper Mold Area	305 x 305 mm
Lower Mold Area	300 x 300 mm
Dimensions	420 x 700 x 1020 mm (LxWxH)
Net Weight	102 kg



JEUX CS-680 spec A-D1A1-030030



JEUX CS-680 spec A-D1M2-030030

## JEUX CS-681

Pneumatic Flat Heat and Cool Press Machine

- Color touch screen control panel
- Software upgradable
- Good for all fabric
- PLC controlled
- Vacuum suction lower platform

### KEY FEATURES

- Both hands push button activation for added safety
- Digital pressure and temperature interlock
- Unique motorized heat / cool changeover
- Selectable foot pedal activation
- Key locking supervisor mode
- Dual time shift mode
- Dual counters
- Trend display

Model name	JEUX CS-681
Power Supply	AC 220 V, 50/60 Hz, 1Φ
Heater Power	1800 W
Compressed Air	> 0.4 MPa
Maximum Temperature	260°C
Timing Range	1-999 Seconds
Upper Mold Area	1060 x 100 mm
Lower Mold Area	1000 x 100 mm
Dimensions	1400 x 920 x 2180 mm (LxWxH)
Net Weight	426 kg



JEUX CS-681 spec V-F2A 1-100010

optional chiller

## JEUX CS-682

Pneumatic Flat Heat and Cool Press Machine

- Consistent temperature
- 3 Zones temperature control
- On screen pressure reading
- Vacuum suction lower platform
- Uniform pressure
- Simple to use
- Good for all fabric

### KEY FEATURES

- Both hands push button activation for added safety
- Key locking supervisor mode
- Digital pressure and temperature interlock
- Foot pedal activation
- Vacuum platform for precise position
- Dual counters
- Trend display
- Self locked mode

Model name	JEUX CS-682
Power Supply	AC 380 V, 50/60 Hz, 1Φ
Heater Power	10000 W
Compressed Air	> 0.4 MPa
Maximum Temperature	260°C
Timing Range	1-999 Seconds
Heat Mold Area	1030 x 530 mm
Cool Mold Area	1030 x 516 mm
Lower Mold Area	1000 x 500 mm
Dimensions	1500 x 1650 x 1510 mm (LxWxH)
Net Weight	1500 kg



JEUX CS-682 spec V-S2B1-100050

chiller provided as standard

## JEUX CS-683

Pneumatic Flat Heat and Cool Press Machine

- Color touch screen control panel
- Activation for added safety
- Consistent temperature
- Software upgradable
- Good for all fabric
- Uniform pressure
- PLC controlled

### KEY FEATURES

- Both hands push button activation for added safety
- Digital pressure and temperature interlock
- Selectable foot pedal activation
- Key locking supervisor mode
- Top plate swing out design
- Dual counters
- Trend display

Model name	JEUX CS-683
Power Supply	AC 220 V, 50/60 Hz, 1Φ
Heater Power	1500 W
Compressed Air	> 0.4 MPa
Maximum Temperature	260°C
Timing Range	1-999 Seconds
Upper Mold Area	305 x 305 mm
Lower Mold Area	300 x 300 mm
Dimensions	710 x 850 x 1100 mm (LxWxH)
Net Weight	135 kg



water circulator provided as standard



optional chiller

JEUX CS-681 spec V-F2A 1-100010

## JEUX CS-686

Pneumatic Flat Heat and Cool Press Machine

- Color touch screen control panel
- Software upgradable
- Good for all fabric
- PLC controlled

### KEY FEATURES

- Both hands push button activation for added safety
- Digital pressure and temperature interlock
- Unique motorized heat /cool changeover
- Selectable foot pedal activation
- Key locking supervisor mode
- Self lock mode
- Dual counters
- Trend display

Model name	JEUX CS-686
Power Supply	AC 220 V, 50/60 Hz, 1Φ
Heater Power	2400 W
Compressed Air	> 0.4 MPa
Maximum Temperature	260°C
Timing Range	1-999 Seconds
Upper Mold Area	310 x 310 mm
Lower Mold Area	300 x 300 mm
Dimensions	680 x 690 x 1520 mm (LxWxH)
Net Weight	196 kg



optional chiller

JEUX CS-686 spec A-F2A1-030030

## JEUX CS-687

### Pneumatic Flat Heat and Cool Press Machine

- Color touch screen control panel
- Software upgradable
- Good for all fabric
- PLC controlled

#### KEY FEATURES

- Both hands push button activation for added safety
- Digital pressure and temperature interlock
- Unique motorized heat / cool changeover
- Selectable foot pedal activation
- Key locking supervisor mode
- Self lock mode
- Dual counters
- Trend display

Model name	JEUX CS-687
Power Supply	AC 220 V, 50/60 Hz, 1Φ
Heater Power	3600 W
Compressed Air	> 0.4 MPa
Maximum Temperature	260°C
Timing Range	1-999 Seconds
Upper Mold Area	610 x 310 mm
Lower Mold Area	600 x 300 mm
Dimensions	1000 x 690 x 1980 mm (LxWxH)
Net Weight	400 kg



chiller provided as standard

JEUX CS-687 spec V-F2A1-060030

## JEUX CS-688

### Pneumatic Flat Press Machine

- Consistent temperature
- Uniform pressure
- Simple to use
- Good for all fabric

#### KEY FEATURES

- Press travel limiting device
- Foot pedal activation
- Vertical press motion
- Preset heating time
- Safety lever

Model name	JEUX CS-688
Power Supply	AC 220 V, 50/60 Hz, 1Φ
Heater Power	900 W
Compressed Air	> 0.4 MPa
Maximum Temperature	260°C
Timing Range	1-999 Seconds
Upper Mold Area	310 x 110 mm
Lower Mold Area	300 x 100 mm
Dimensions	355 x 235 x 750 mm (LxWxH)
Net Weight	18 kg



JEUX CS-688 spec A-A1A1-030010

## JEUX CS-693

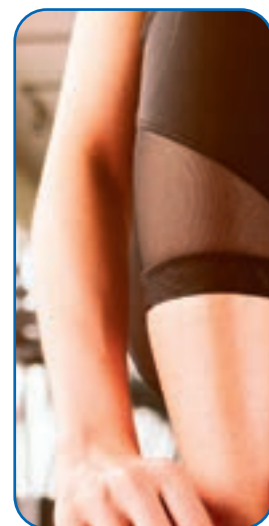
### Pneumatic Flat Press Machine

- Color touch screen control panel
- PLC controlled
- 3 Zones temperature control
- Tolerance across bed
- On screen pressure reading

#### KEY FEATURES

- Both hands push button activation for added safety
- Digital pressure and temperature interlock
- Selectable foot pedal activation
- Key locking supervisor mode
- Dual time shift mode
- Self leveling platform
- Dual counters
- Trend display

Model name	JEUX CS-693
Power Supply	AC 220 V, 50/60 Hz, 1Φ
Heater Power	3600 W
Compressed Air	> 0.4 MPa
Maximum Temperature	260°C
Timing Range	1-999 Seconds
Upper Mold Area	780 x 380 mm
Lower Mold Area	780 x 380 mm
Dimensions	800 x 880 x 1800 mm (LxWxH)
Net Weight	183 kg



JEUX CS-693 spec A-A1A1-078038

## JEUX CS-694

### Pneumatic Flat Press Machine

- Consistent temperature
- Uniform pressure
- Simple to use
- Good for all fabric
- Extremely affordable

#### KEY FEATURES

- Both hands push button activation for added safety
- Press travel limiting device
- Optional lighting system
- Foot pedal activation
- Vertical press motion
- Preset heating time
- Safety lever

Model name	JEUX CS-694
Power Supply	AC 220 V, 50/60 Hz, 1Φ
Heater Power	3600 W
Compressed Air	> 0.4 MPa
Maximum Temperature	260°C
Timing Range	1-999 Seconds
Upper Mold Area	780 x 380 mm
Lower Mold Area	780 x 380 mm
Dimensions	800 x 880 x 1800 mm (LxWxH)
Net Weight	183 kg



JEUX CS-694 spec A-A1A1-078038

## JEUX CS-695

### Automatic Twin Bed Flat Press Machine

- Color touch screen control panel
- 2 Zones temperature control
- On screen pressure reading
- Consistent temperature
- Extremely affordable
- Uniform pressure
- PLC controlled

#### KEY FEATURES

- Both hands push button activation for added safety
- Digital pressure and temperature interlock
- Unique pneumatic twin bed changeover
- Selectable foot pedal activation
- Key locking supervisor mode
- Trend display
- Dual counters

Model name	JEUX CS-695
Power Supply	AC 220 V, 50/60 Hz, 1Φ
Heater Power	3200 W
Compressed Air	> 0.4 MPa
Maximum Temperature	260°C
Timing Range	1-999 Seconds
Upper Mold Area	300 x 600 mm
Lower Mold Area	300 x 600 mm
Dimensions	1100 x 800 x 1700 mm (LxWxH)
Net Weight	384 kg



JEUX CS-695 spec V-H1M2-030060

## JEUX CS-696

### Pneumatic Flat Press Machine

- Consistent temperature
- Uniform pressure
- Simple to use
- Good for all fabric
- Extremely affordable

#### KEY FEATURES

- Digital temperature controller
- Press travel limiting device
- Vertical press motion
- Preset heating time

Model name	JEUX CS-696
Power Supply	AC 220 V, 50/60 Hz, 1Φ
Heater Power	1000 W
Maximum Temperature	260°C
Timing Range	1-999 Seconds
Upper Mold Area	206 x 174 mm
Lower Mold Area	203 x 152 mm
Dimensions	440 x 560 x 910 mm (LxWxH)
Net Weight	48 kg
Extra Lower Mold	150x50, Ø68 mm



Provided as standard



Ø 68 mm



150x50 mm

JEUX CS-696 spec A-D1A1-020015

## JEUX CS-697

### Pneumatic Curve Heat and Cool Press Machine

- Consistent temperature
- Good for all fabric
- Uniform pressure
- PLC controlled
- Simple to use

#### KEY FEATURES

- Both hands push button activation for added safety
- Digital pressure and temperature interlock
- Pneumatic heat /cool changeover
- Selectable foot pedal activation
- Key locking supervisor mode
- Self lock mode
- Dual counters
- Trend display

Model name	JEUX CS-697
Power Supply	AC 220 V, 50/60 Hz, 1Φ
Heater Power	600 W
Compressed Air	> 0.4 MPa
Maximum Temperature	260°C
Timing Range	1-999 Seconds
Upper Mold Area	165 x 66 x R80 mm
Lower Mold Area	160 x 60 x R70 mm
Dimensions	400 x 550 x 1200 mm (LxWxH)
Net Weight	56 kg



water circulator provided as standard



optional chiller

JEUX CS-697 spec A-P2A1-160060R070

## JEUX CS-698

### Pneumatic Flat Heat and Cool Press Machine

- Color touch screen control panel
- On screen pressure reading
- Consistent temperature
- Extremely affordable
- Uniform pressure
- PLC controlled

#### KEY FEATURES

- Both hands push button activation for added safety
- Digital pressure and temperature interlock
- Unique pneumatic heat /cool changeover
- Selectable foot pedal activation
- Key locking supervisor mode
- Dual time shift mode
- Trend display
- Dual counters

Model name	JEUX CS-698
Power Supply	AC 220 V, 50/60 Hz, 1Φ
Heater Power	1200 W
Compressed Air	> 0.4 MPa
Maximum Temperature	260°C
Timing Range	1-999 Seconds
Upper Mold Area	300x100 mm
Lower Mold Area	300x100 mm
Dimensions	420 x 590 x 1150 mm (LxWxH)
Net Weight	65 kg



water circulator provided as standard



optional chiller

JEUX CS-698 spec A-P2A1-030010



## JEUX CS-700

Pneumatic Long Curve Press Machine

- Touch screen control panel
- Zones temperature control
- Screen pressure reading
- Consistent temperature
- Uniform Pressure
- PLC controlled

### KEY FEATURES

- Both hands push button activation for added safety
- Digital pressure and temperature interlock
- Vacuum platform for precise positioning
- Key locking supervisor mode
- Dual time shift mode
- Trend display
- Dual counters

Model name	JEUX CS-700
Power Supply	AC 220 V, 50/60 Hz, 1Φ
Heater Power	2100 W
Compressed Air	> 0.4 MPa
Maximum Temperature	260°C
Timing Range	1-999 Seconds
Upper Mold Area	1210 x 70 mm
Lower Mold Area	1210 x 50 mm
Dimensions	1270 x 710 x 1400 mm (LxWxH)
Net Weight	250 kg



JEUX CS-700 spec V-A1A1-121005

## JEUX CS-701

Pneumatic Flat Press Machine

- Consistent temperature
- Uniform pressure
- Simple to use
- Good for all fabric

### KEY FEATURES

- Top plate flip down design
- Foot pedal activation
- CoMPact body size
- Preset heating time

Model name	JEUX CS-701
Power Supply	AC 220 V, 50/60 Hz, 1Φ
Heater Power	400 W
Compressed Air	> 0.4 MPa
Maximum Temperature	260°C
Timing Range	1-999 Seconds
Upper Mold Area	110 x 110 mm
Lower Mold Area	Φ100 mm
Dimensions	300 x 490 x 500 mm (LxWxH)
Net Weight	28 kg



JEUX CS-701 spec A-S1A1-D100

## JEUX CS-702

### Automatic Double Heating Press Machine

- Color touch screen control panel
- 4 heaters independently controllable
- On screen pressure reading
- Consistent temperature
- Extremely affordable
- Uniform pressure
- PLC controlled

#### KEY FEATURES

- Both hands push button activation for added safety
- Digital pressure and temperature interlock
- Upper and lower mold can move independently
- Digitally controlled rotating action
- Selectable foot pedal activation
- Key locking supervisor mode
- Trend display
- Dual counters

Model name	JEUX CS-702
Power Supply	AC 220 V, 50/60 Hz, 1Φ
Heater Power	2400 W
Compressed Air	> 0.4 MPa
Maximum Temperature	260°C
Timing Range	1-999 Seconds
Upper Mold Area	110 x 200 mm
Lower Mold Area	110 x 200 mm
Dimensions	700 x 1010 x 1500 mm (LxWxH)
Net Weight	182 kg



JEUX CS-702 spec A-E2A1-011020

## JEUX CS-703

### Pneumatic Flat Press Machine

- Color touch screen control panel
- PLC controlled
- 3 Zones temperature control
- Even temperature, typical 3°C tolerance across bed
- On screen pressure reading
- Vacuum suction lower platform
- Double lower mold for left and right sleeves operation

#### KEY FEATURES

- Both hands push button activation for added safety
- Digital pressure and temperature interlock
- Vacuum platform for precise positioning
- Selectable foot pedal activation
- Key locking supervisor mode
- Dual time shift mode
- Offset lower platform
- Dual counters

Model name	JEUX CS-703
Power Supply	AC 220 V, 50/60 Hz, 1Φ
Heater Power	3000 W
Compressed Air	> 0.4 MPa
Maximum Temperature	260°C
Timing Range	1-999 Seconds
Upper Mold Area	900 x 230 mm
Lower Mold Area	900 x 70 mm
Dimensions	950 x 740 x 2150 mm (LxWxH)
Net Weight	282 kg



JEUX CS-701 spec A-S1A1-D100

## JEUX CS-704

Pneumatic Flat Press Machine

- Consistent temperature
- Uniform pressure
- Simple to use
- Good for all fabric
- Extremely affordable

### KEY FEATURES

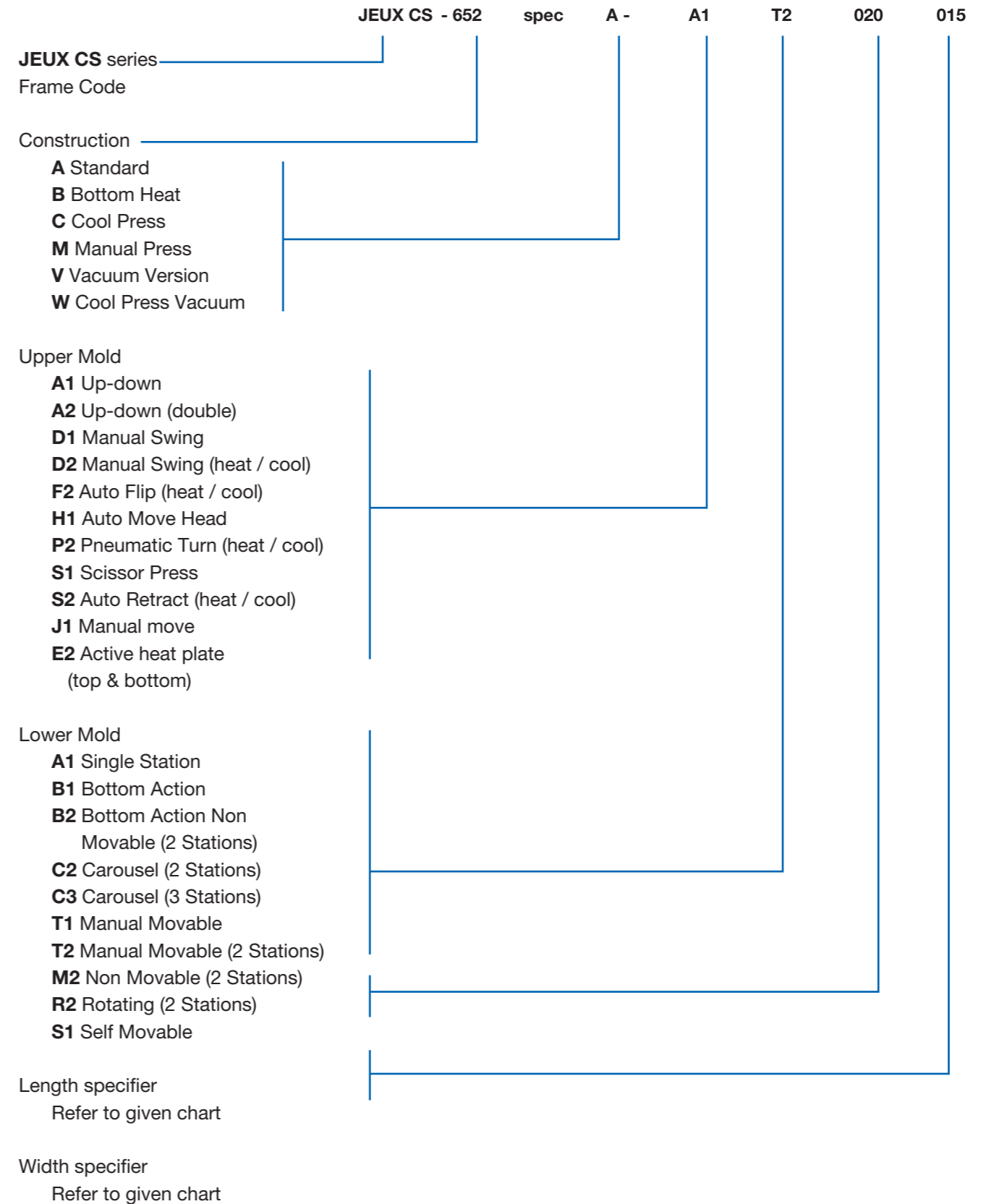
- Both hands push button activation for added safety
- Press travel limiting device
- Optional lighting system
- Foot pedal activation
- Vertical press motion
- Preset heating time
- Safety lever

Model name	JEUX CS-704
Power Supply	AC 220 V, 50/60 Hz, 1Φ
Heater Power	2500 W
Compressed Air	> 0.4 MPa
Maximum Temperature	260°C
Timing Range	1-999 Seconds
Upper Mold Area	620 x 420 mm
Lower Mold Area	610 x 410 mm
Dimensions	1250 x 810 x 1170 mm (LxWxH)
Net Weight	195 kg



JEUX CS-704 spec A-A1T2-061041

## SELECTION GUIDE FOR HEAT PRESSING MACHINES



Model no.	Lower Mold Area (mm)	Lower Mold Area (inch)	Swing head	Single lower mold	Double lower mold	Economy version	Advance PLC version	Flat press	Curve press	Vacuum version, table included	Heat	Cool	Bottom heat	Cylinder Size φ (mm)	Lower Mold Pressure (kgf / cm <sup>2</sup> @ 4bar)	Heating Zone no.	Heating Power (W)	Status
JEUX CS-651 spec A-A2R2-073073R033	80x73xR33	3x3xR1.3		•		•				•	•			63	1.19	2	1500	
JEUX CS-651 spec A-A2R2-120073R050	120x73xR50	5x3xR2			•		•			•	•			63	0.73	2	1500	
JEUX CS-651 spec A-A2R2-185073R075	185x73xR75	7x3xR3			•		•			•	•			63	0.47	2	1500	
JEUX CS-652 spec A-A1A1-020015	203x152	8x6		•		•		•			•			63	0.41	1	1000	
JEUX CS-652 spec A-A1T2-020015	203x152	8x6			•	•		•			•			63	0.41	1	1000	
JEUX CS-653 spec A-D1A1-020015	203x152	8x6	•	•			•	•			•			63	0.41	1	1000	
JEUX CS-653 spec A-D1M2-020015	203x152	8x6	•		•		•	•			•			63	0.41	1	1000	
JEUX CS-653 spec B-D1M2-010007	100x70	4x3	•		•		•	•			•		•	63	1.82	2	1800	
JEUX CS-653 spec B-D1M2-020015	203x152	8x6	•		•		•	•			•		•	63	0.41	2	1800	
JEUX CS-654 spec A-A1A1-030030	300x300	12x12		•		•		•			•			100	0.36	1	1200	
JEUX CS-654 spec A-A1T2-030030	300x300	12x12			•	•		•			•			100	0.36	1	1200	
JEUX CS-654 spec A-A1A1-040040	400x400	16x16		•		•		•			•			100	0.20	1	2600	
JEUX CS-655 spec A-A1A1-030030	300x300	12x12		•		•		•			•			100	0.36	1	1500	
JEUX CS-655 spec A-A1T2-030030	300x300	12x12			•		•	•			•			100	0.36	1	1500	
JEUX CS-655 spec B-A1A1-030030	300x300	12x12		•		•		•			•		•	100	0.36	2	3000	
JEUX CS-655 spec V-A1A1-030030	300x300	12x12		•		•		•		•	•			100	0.36	1	1500	
JEUX CS-655 spec A-A1A1-040040	400x400	16x16		•		•		•			•			100	0.20	1	2600	
JEUX CS-655 spec V-A1A1-040040	400x400	16x16		•		•		•		•	•			100	0.20	1	2600	
JEUX CS-658 spec A-D2A1-038008	380x80	15x3	•	•			•	•			•	•		63	0.42	1	1000	
JEUX CS-661 spec A-F2A1-030010	300x95	12x4		•		•		•			•	•		80	0.72	1	1000	
JEUX CS-662 spec A-A1A1-120050	1200x500	48x20		•		•		•			•			200	0.21	3	6000	
JEUX CS-662 spec V-A1A1-120050	1200x500	48x20		•		•		•		•	•			200	0.21	3	6000	
JEUX CS-662 spec W-A1A1-120050	1200x500	48x20		•		•		•		•		•		200	0.21			
JEUX CS-662 spec C-A1A1-120050	1200x500	48x20		•		•		•			•		•	200	0.21			
JEUX CS-663 spec A-D2A1-130040R083	130x40xR83	5x1.5xR3.3	•	•			•	•			•	•		63	2.45	1	600	
JEUX CS-664 spec A-D1A1-028016	280x160	11x6.5	•	•		•		•			•			63	0.28	1	1500	
JEUX CS-665 spec A-A1A1-060012	600x120	24x5		•		•		•			•			100	0.45	1	1600	
JEUX CS-665 spec V-A1A1-060012	600x120	24x5		•		•		•		•	•			100	0.45	1	1600	
JEUX CS-665 spec B-A1A1-060012	600x120	24x5		•		•		•			•		•	100	0.45	2	3200	
JEUX CS-666 spec A-A1A1-060012	600x120	24x5		•		•		•			•			100	0.45	1	1600	
JEUX CS-667 spec A-A1A1-300095R191	300x95xR191	12x4xR7.5		•		•		•			•			80	0.72	1	1200	
JEUX CS-667 spec V-A1A1-300095R191	300x95xR191	12x4xR7.5		•		•		•		•	•			80	0.72	1	1200	
JEUX CS-668 spec A-A1A1-300095R191	300x95xR191	12x4xR7.5		•		•		•			•			80	0.72	1	1200	
JEUX CS-668 spec V-A1A1-300095R191	300x95xR191	12x4xR7.5		•		•		•		•	•			80	0.72	1	1200	
JEUX CS-669 spec A-A1A1-040040	400x400	16x16		•		•		•			•			100	0.20	1	2600	
JEUX CS-669 spec V-A1A1-040040	400x400	16x16		•		•		•		•	•			100	0.20	1	2600	
JEUX CS-671 spec M-D1A1-020015	203x152	8x6	•	•		•		•			•			-		1	1000	
JEUX CS-672 spec A-D1A1-030030	300x300	12x12	•	•		•		•			•			80	0.23	1	1500	
JEUX CS-672 spec A-D1M2-030030	300x300	12x12	•		•		•	•			•			80	0.23	1	1500	
JEUX CS-673 spec A-S1A1-028013	280x130	11x5		•		•		•			•			63	0.35	1	1300	
JEUX CS-674 spec A-D2A1-020015	203x152	8x6	•	•		•		•			•	•		63	0.41	1	1000	

Model no.	Lower Mold Area (mm)	Lower Mold Area (inch)	Swing head	Single lower mold	Double lower mold	Economy version	Advance PLC version	Flat press	Curve press	Vacuum version, table included	Heat	Cool	Bottom heat	Cylinder Size φ (mm)	Lower Mold Pressure (kgf / cm <sup>2</sup> @ 4bar)	Heating Zone no.	Heating Power (W)	Status
JEUX CS-675 spec A-A1A1-050050	500x500	20x20		•		•		•			•			125	0.20	1	3500	
JEUX CS-676 spec A-A1A1-120080	1200x800	48x32		•		•		•			•			250	0.21	6	12000	
JEUX CS-677 spec B-A1A1-032009	320x90	13x3.5		•		•		•			•		•	63	0.44	2	2000	
JEUX CS-678 spec A-D1B2-050050	500x500	20x20	•		•		•	•			•			224	4.00	1	3500	
JEUX CS-679 spec A-A1A1-011011	110x110	4.5x4.5		•		•		•			•			63	1.05	1	600	
JEUX CS-680 spec A-D1A1-030030	300x300	12x12	•	•			•	•			•			80	0.23	1	1500	
JEUX CS-680 spec A-D1M2-030030	300x300	12x12	•		•		•	•			•			80	0.23	1	1500	
JEUX CS-681 spec V-F2A1-100010	1000x100	40x4		•		•		•		•	•	•		125	0.50	1	1800	
JEUX CS-682 spec V-S2B1-100050	1000x500	40x20		•		•		•		•	•	•		160	3.28	3	7500	
JEUX CS-686 spec A-F2A1-030030	300x300	12x12		•		•		•			•	•		100	0.36	1	2400	
JEUX CS-687 spec V-F2A1-060030	600x300	24x12		•		•		•		•	•	•		160	0.44	1	3200	
JEUX CS-688 spec A-A1A1-030010	300x100	12x4		•		•		•			•			50	0.26	1	900	
JEUX CS-693 spec A-A1A1-078038	780x380	30x15		•		•		•			•			160	0.28	3	3000	
JEUX CS-693 spec V-A1A1-078038	780x380	30x15		•		•		•		•	•			160	0.28	3	3000	
JEUX CS-694 spec A-A1A1-078038	780x380	30x15		•		•		•			•			160	0.28	1	3600	
JEUX CS-695 spec V-H1M2-030060	300x600	12x24			•		•	•		•	•			100	0.18	2	2400	
JEUX CS-696 spec A-D1A1-020015	203x152	8x6	•	•		•		•			•			63	0.41	1	1000	
JEUX CS-697 spec A-P2A1-160060R070	160x60xR70	6.5x2.5xR3		•		•		•		•	•			80	2.14	1	600	
JEUX CS-698 spec A-P2A1-030010	300x100	12x4		•		•		•			•	•		80	0.68	1	1200	
JEUX CS-700 spec V-A1A1-121005	1210x50	48x2		•		•		•		•	•			100	0.53	3	2100	
JEUX CS-701 spec A-S1A1-D70	D70	D3		•		•		•			•			50	1.73	1	400	
JEUX CS-702 spec A-E2P2-011020	110x200	4.5x8		•		•		•			•			80	0.47	4	2400	
JEUX CS-703 spec V-A1M2-090007	900x70	36x3			•		•	•		•	•			125	0.40	3	3000	
JEUX CS-704 spec A-A1T2-061041	610x410	24x16			•		•	•			•			125	0.2	1	2500	



## TESTING MACHINES

## TESTING MACHINES

### JEUX HT-309

#### Hydrostatic Tester

- Consistent pressure
- Simple to use
- Good for all fabric

#### KEY FEATURES

- Adjustable in / out water flow rate
- Quick release hand clamp
- Direct pressure read out
- Recycling water supply
- Slant test platform
- Hand free testing
- Digital timer

Model name	JEUX HT-309
Power Supply	AC 220 V, 50/60 Hz, 1Ø
Power Consumption	500 W
Maximum Pressure	6 PSI
Timing Range	1-999 Seconds
Dimensions	1000 x 500 x 1350 mm (LxWxH)
Net Weight	40 kg



JEUX HT-309

## JEUX HT-360

### Hydrostatic Tester

- Color touch screen control panel
- Consistent pressure
- Simple to use
- Good for all fabric
- PLC controlled
- Multi-unit display (bar, psi, kgf, mm h<sub>2</sub>O)
- Trend display

### KEY FEATURES

- Adjustable in / out water flow rate
- Water temperature high alarm
- Quick release hand clamp
- Direct pressure read out
- Recycling water supply
- Slant test platform
- Hand free testing
- Digital timer

Model name	JEUX HT-360
Power Supply	AC 220 V, 50/60 Hz, 1ϕ
Heater Power	370 W
Maximum Pressure	30 psi
Timing Range	1-999 Seconds
Dimensions	1000 x 500 x 1350 mm (LxWxH)
Net Weight	65 kg



JEUX HT-360

## JEUX TD-100

### Portable Bonding Press Station

- Modular design
- Controller and heating plate
- Consistent temperature
- Uniform temperature
- Simple to use

### KEY FEATURES

- Ergonomic handle design
- Heating plate can positioned vertically
- Digital temperature controller

Model name	JEUX TD-100
Power Supply	AC 220 V, 50/60 Hz, 1ϕ
Heater Power	100 W
Maximum Temperature	260°C
Dimensions	330 x 160 x 230 mm (LxWxH)
Net Weight	6 kg



JEUX TD-100

## JEUX TD-200

### Portable Roller Spotting Station

- Modular design
- Controller and heating roller
- Consistent temperature
- Uniform temperature
- Simple to use

### KEY FEATURES

- Heating roller can suspended placed
- Digital temperature controller
- CoMPact body size

Model name	JEUX TD-200
Power Supply	AC 220 V, 50/60 Hz, 1ϕ
Heater Power	200 W
Maximum Temperature	260°C
Roller Diameter	30 mm
Dimensions	170 x 120 x 260 mm (LxWxH)
Net Weight	2 kg



JEUX TD-200

## OPTIONAL ITEMS

---

### NOZZLES



### ROLLERS



### TAPES

